



## **Performance Air Intake Kit Part Number: 827-698**

**2012-2018 BMW 640i 3.0L N55  
2013-2019 BMW 640i Gran Coupe 3.0L N55  
2014-2019 BMW 640i xDrive Gran Coupe 3.0L N55  
2014-2018 BMW 640i xDrive 3.0L N55**

## **Installation Instructions**

For technical inquiries please email us at [tech@hpsperformanceproducts.com](mailto:tech@hpsperformanceproducts.com)

In the email, please include the following information for faster response:

- Year / Make / Model / Engine of your vehicle.
- If it is a fitment issue, please include pictures showing the fitment problem.
- If there are missing parts, please list the part number(s) from the bill of materials on the 2nd page.
- Optional but recommended – Your contact phone number and preferred call back time.

You can also give us a call via 626-747-9200 for tech support Monday-Friday, 9:00am-5:00pm Pacific Time.

# Bill of Materials

## Kit Number: 827-698

Description	Prep	Part Number	Qty	Check
Air Intake Pipe	1	529-870	1	
Heat Shield	2	531-871	1	
Bracket	3	530-872	1	
HPS Performance Air Filter	4	HPS-4337	1	
6mm Bolt x 16mm Long	5	HW-B6-16	1	
M5 Bolt x 12mm long	5	HW-B5-12	4	
6mm Flat Washer x 16mm OD	5	HW-FW6L	3	
M5 Flat Washer x 10mm OD	5	HW-FW5	2	
6mm Flange Nut	5	HW-N6	2	
Rubber Vibration Mount x 1" Tall	5	HW-RM6-100	1	
Rubber Grommet 25mm ID x 44mm OD	5	9307K83	1	
Bubble Edge Trim x 51 Inches	5	Bubble Edge Trim	1	
Thin Edge Trim x 8 Inches	5	Thin Edge Trim	1	

- **Before installing any parts of this intake system, please read the instructions thoroughly.**
- **Verify the contents of this intake kit before disassembling your vehicle.**
- **Report any defective or missing parts to HPS directly. The HPS dealer you purchased this product from might not have the replacement parts you need.**
- **Installation requires moderate mechanical skills. A qualified mechanic is highly recommended.**
- **Do not attempt to install the intake system while the engine is hot.**
- **This installation may require removal of coolant lines that may be hot.**
- **For technical inquiries, please e-mail us at [tech@hpsperformanceproducts.com](mailto:tech@hpsperformanceproducts.com)**

## **PLEASE READ CAREFULLY BEFORE INSTALLATION!**

This installation is not for the novice customer. Install this product with EXTREME caution! Misuse of this product can destroy your engine! If you are not mechanically inclined, please have a professional automotive mechanic install this kit.

***NOTE: HPS holds no responsibility for any engine damage that results from misuse of this product.***

## **GETTING STARTED**

1. Turn the ignition OFF and disconnect the vehicle's negative battery cable. If the engine has run within the past two hours let it cool down.

NOTE: Disconnecting the negative battery cable erases pre-programmed electronic memories. Write down all memory settings before disconnecting the negative battery cable. Some radios will require an anti-theft code to be entered after the battery is reconnected. The anti-theft code is typically supplied with your owner's manual. In the event your vehicles' anti-theft code cannot be recovered, contact an authorized dealership to obtain your vehicles anti-theft code. We also highly recommend NOT discarding any stock parts after the installation.





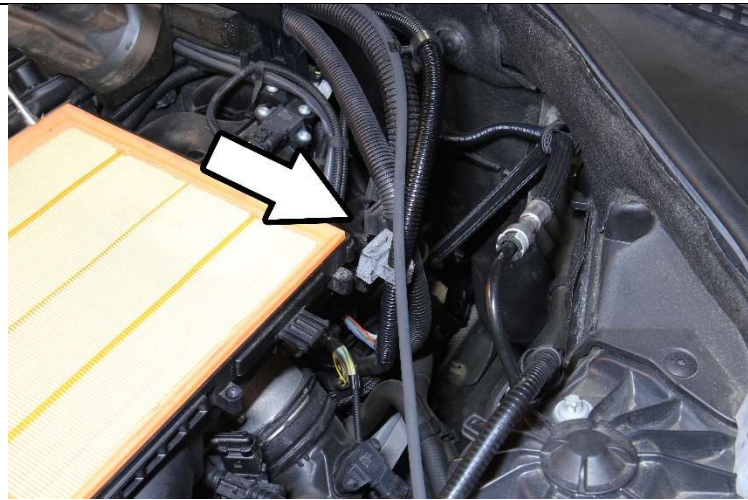
3. Loosen the six torx bolts securing the upper air box assembly.



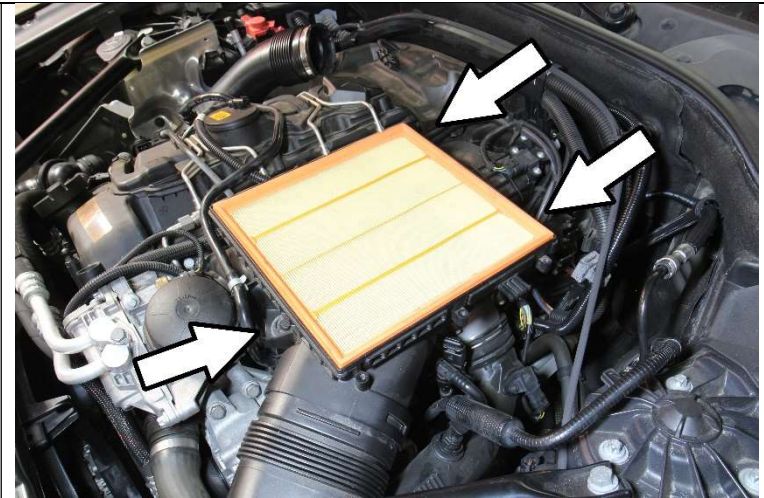
4. Loosen the hose clamp securing the stock air intake tube. Disconnect the mass air flow sensor harness connector and carefully lift the stock air intake tube from its grommet.



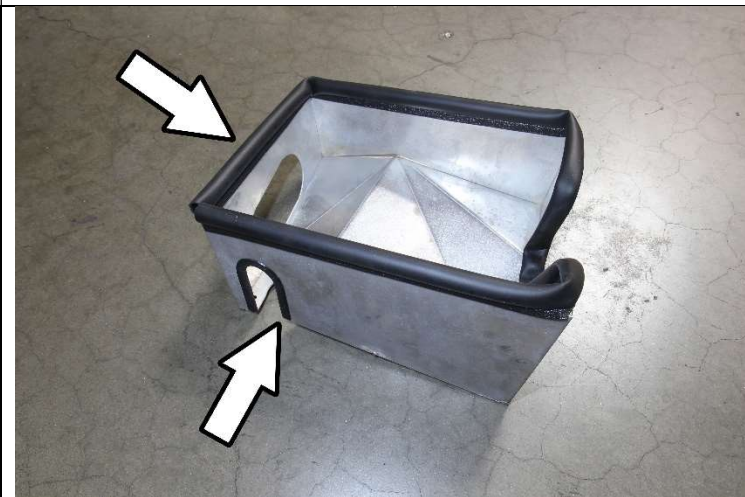
5. Remove the air intake tube along with the upper air box assembly from the vehicle.



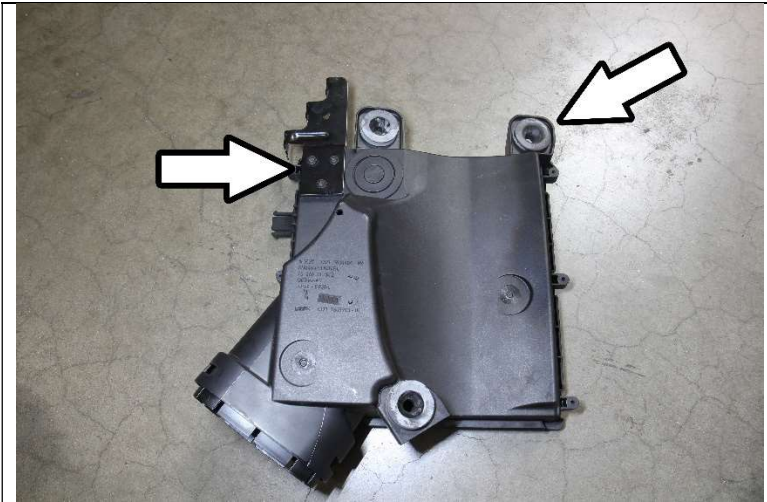
6. Disconnect the three rubber harness mounts from the lower air box assembly.



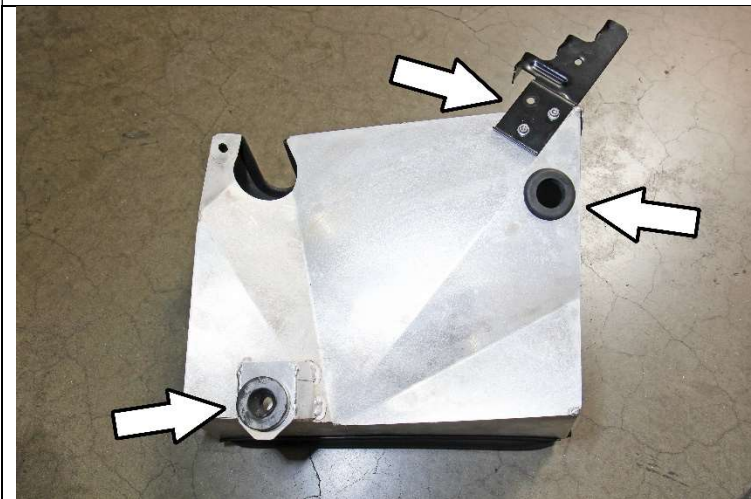
7. Lift the lower air box assembly from its grommets, then disconnect the lower air box from the air duct. Remove the lower air box assembly from the vehicle.



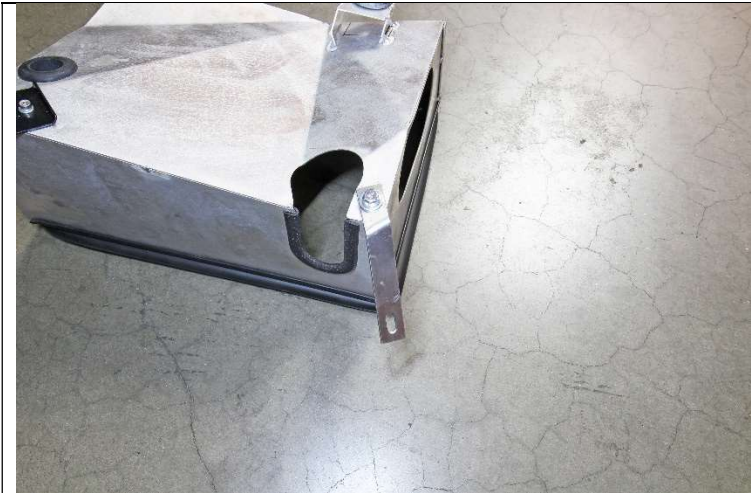
8. Install the bubble edge trim around the top of the provided HPS heatshield. Install the thin edge trim into the cutout shown in the image above.



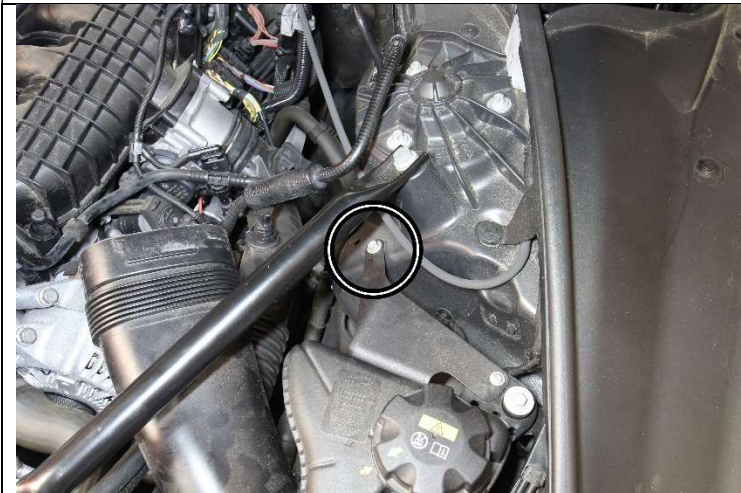
9. Remove the factory bracket and the rubber grommet mount from the lower air box assembly.



10. Install the factory rubber grommet into the bracket of the heat shield. Insert the provided rubber grommet into the slot located near the bracket. Install and secure the factory mounting bracket using the provided M4 bolts.



11. Loosely install the provided heat shield bracket onto the heat shield using the M6x16mm bolt, nut, and washers.



12. Remove the 10mm bolt securing the coolant reservoir shown in the image above.





13. Insert the provided 1" vibration mount replacing the 10mm bolt removed in step 12.



14. Insert the heat shield into the vehicle.



15. Align and secure the heat shield bracket onto the vibration mount using the provided M6 nut. Re-attach the rubber harness mounts onto the bracket.



16. Remove and insert the mass air flow sensor into the HPS intake pipe using the provided M4 allen bolts. Insert the factory engine cover mounts into the HPS intake pipe.



17. Install the provided HPS performance air filter onto the intake pipe.



18. Insert and secure the HPS intake pipe into the vehicle. Reconnect the MAF sensor harness connector.



19. Re install the engine cover into the vehicle.

### Final Steps

Once the intake has been positioned, tighten all of the clamps and secure all of the parts.

Upon completion of the installation, reconnect the negative battery terminal before you start the engine. Double check to make sure everything is tight and properly positioned before starting the vehicle.

Start the engine. Let the car idle for 3 minutes. Perform a final inspection before driving. Listen carefully for any odd noises, rattles and/or air leaks prior to taking it for a test drive. If any problems arise go back and check the vacuum lines, hoses and clamps that may be causing leaks or rattles and correct the problem.

Periodically, recheck the alignment of the intake system and make sure there is proper clearance around and along the length of the intake. Failure to follow proper maintenance procedures may cause damage to the intake and will void the warranty.



HPS Performance Air Intake Kit with Heat Shield (827 Series)  
2012 - 2019 BMW 640i 3.0L Turbo (N55)  
Part Number: 827-698

Maximum Horsepower Gains = 10.8 whp @ 5000 rpm



HPS Performance Air Intake Kit with Heat Shield (827 Series)  
2012 - 2019 BMW 640i 3.0L Turbo (N55)  
Part Number: 827-698

Maximum Torque Gains = 11.4 ft/lb @ 5000 rpm

