



Equipped with AEM® Dryflow™ Filter
No Oil Required!

INSTALLATION INSTRUCTIONS

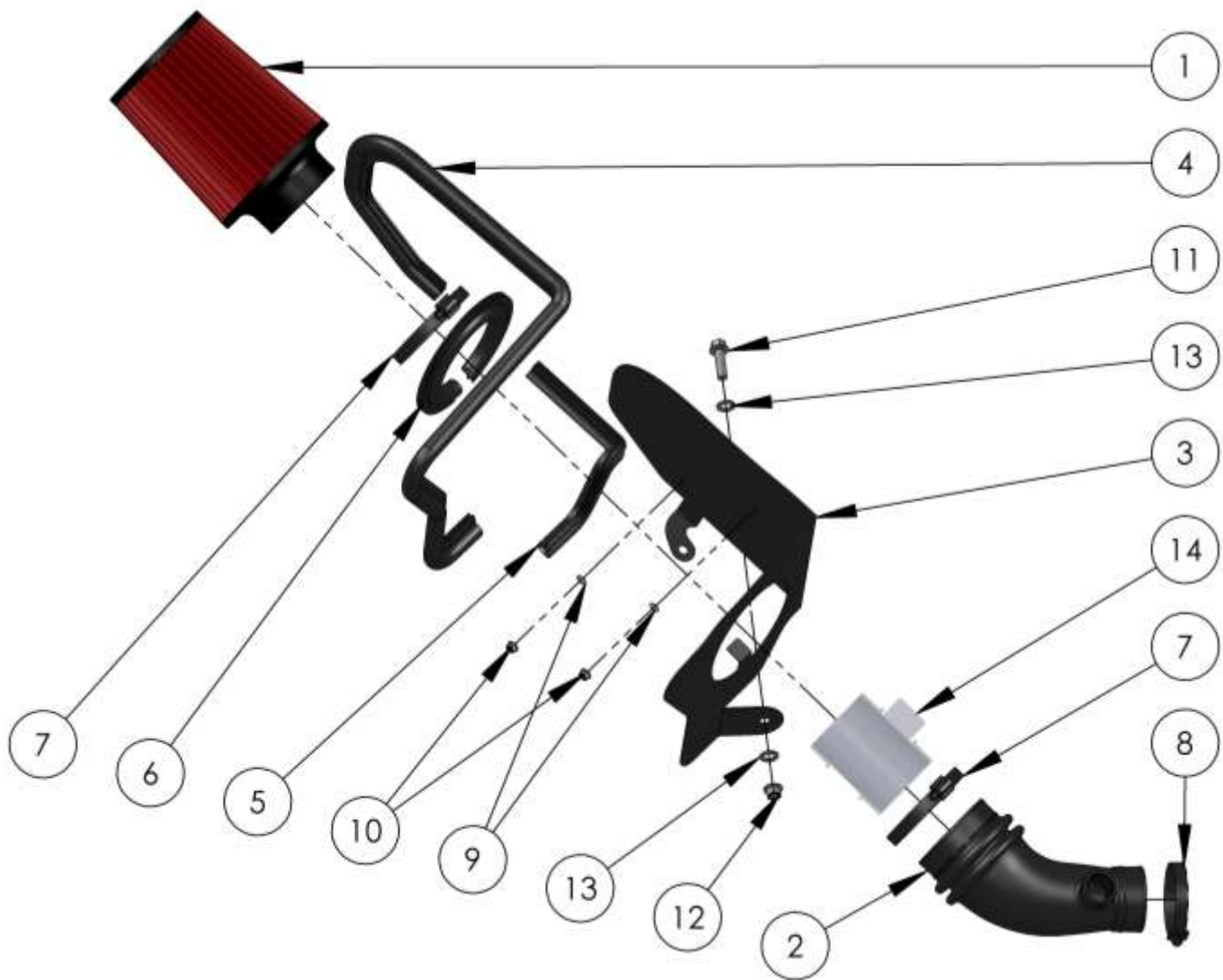
PART NUMBER

21-741

2014	Chevrolet	Cruze	2.0	DSL
2015	Chevrolet	Cruze	2.0	DSL

Not legal for sale or use on any pollution controlled motor vehicle in California or states adopting California emission procedures. See AEMIntakes.com for CARB status on each part for a specific vehicle.

ITEM NO.	PART NUMBER	DESCRIPTION	QTY.
1	21-2113DK	AIR FILTER	1
2	5-1094	COUPLER; 3.25" ID X 2", 45 DEG, BLACK	1
3	20-8540	HEAT SHIELD; 2014 CHEVROLET CRUZE TB/PC	1
4	102486	EDGE TRIM, 3/4" TOP LOC., 44"L	1
5	102506	EDGE TRIM; 3/4" TOP LOC., 12"L	1
6	8-4017	EDGE TRIM; 3/4" TOP LOC., 17"L	1
7	08620K	1/2" BANDHOSE CLAMP, 3.15"-4.00"	2
8	08554K	1/2" BANDHOSE CLAMP, 2.15"-3.00"	1
9	1-3001	WASHER, #12 NYLON 6/6	2
10	444.460.04	NUT; M6 HEX SERRATED	2
11	RHBA-M10X125X35	BOLT; M10X1.25X35MM BRITE ZINC	1
12	07527	NUT; M10X1.25 HEX SERRATED; TYZ	1
13	RHWA-M10	WASHER, 9/32" ID, 5/8" OD	2
14	MAF SENSOR HOUSING	(FROM VEHICLE; NOT INCLUDED)	1



Read and understand these instructions **BEFORE** attempting to install this product. Failure to follow installation instructions and not using the provided hardware may damage the intake tube, throttle body and engine.

Tools Needed:

- Screw Driver
- Socket Driver
- 10mm Socket
- 15mm Socket

1. Preparing Vehicle

- a. Make sure vehicle is parked on level surface.
- b. Set the parking brake.
- c. If engine has run in the past two hours, let it cool down.
- d. Disconnect negative battery terminal.
- e. Do not discard stock components after removal of the factory system.
- f. Open the air intake kit package and make sure all parts are included.

2. Removal of stock system



a. Disconnect wiring harness from the MAF sensor.



b. Loosen clamp securing the factory duct to the turbo-charger inlet.



c. Disconnect crank vent tube by squeezing the retaining ring on the serrated flats and pulling free.



d. Loosen clamp retaining the factory duct to the MAF sensor housing and remove the duct.



e. Remove the bolts securing the control module to the side of the factory air box. Keep these bolts.



f. Lift the air box out and remove the nut on the motor mount shown above with a 15mm socket.



g. Remove the front grommet from the factory air box and put it back in its corresponding cradle in the engine bay with the large end facing the front of the vehicle.



h. Loosen the clamp securing the MAF sensor housing to the factory air box and pull the housing out.

3. Installation of AEM® intake system.

- a. When installing the intake system, do not completely tighten the hose clamps or mounting hardware until instructed to do so.



a. Assemble the heat shield and edge trim according to the diagram on pg2 including the factory grommet as shown above.



b. Lower the heat shield into the engine bay as shown above and reinstall the motor mount nut. Install the included fastener assembly on pg2 through the grommet.



c. Mount the control module to the heat shield as shown above using the factory bolts and provided nuts and nylon washers.



d. Install the filter with the tab of the heat shield between the clamp and filter flange. Install the MAF sensor housing and tighten the clamp to secure the assembly.



e. Maneuver your new AEM duct into place and secure with the included hose clamps. Torque all clamps to 30in-lbs. Reconnect MAF sensor wiring and crank vent tube to the AEM duct ensuring that the retaining ring engages the barb on the duct.



f. Factory air induction system.



g. Finished installation of AEM Intake System.

4. Reassemble Vehicle

- a. Position all components for the best fitment. Be sure that they do not contact any unintended part of the vehicle.
- b. Check for proper hood clearance. Re-adjust components if necessary and re-tighten them.
- c. Inspect the engine bay for any loose tools and check that all fasteners that were moved or removed are properly tightened.
- d. Reconnect negative battery terminal and start engine. Let the vehicle idle for 3 minutes. Perform a final inspection before driving the vehicle.

5. Service and Maintenance

- a. AEM Induction Systems requires cleaning the intake system's air filter element every 100,000 miles. When used in dusty or off-road environments, our filters will require cleaning more often. We recommend that you visually inspect your filter once every 25,000 miles to determine if the screen is still visible. When the screen is no longer visible some place on the filter element, it is time to clean it. To clean, purchase our Synthetic air filter cleaner, part number 1-1000 and follow the easy instructions.
- b. Use window cleaner to clean your powder coated AEM® intake components.

For technical inquiries
 e-mail us at
sales@aemintakes.com
 or
 call us at
 800.992.3000

AEM Air Intake System Warranty Policy

AEM® warrants that its intake systems will last for the life of your vehicle. AEM® will not honor this warranty due to mechanical damage (i.e. improper installation or fitment), damage from misuse, accidents or flying debris. AEM® will not warrant its powder coating if the finish has been cleaned with a hydrocarbon-based solvent. The powder coating should only be cleaned with a mild soap and water solution. Proof of purchase of both the vehicle and AEM® intake system is required for redemption of a warranty claim.

This warranty is limited to the repair or replacement of the AEM® part. In no event shall this warranty exceed the original purchase price of the AEM® part nor shall AEM® be responsible for special, incidental or consequential damages or cost incurred due to the failure of this product. Warranty claims to AEM® must be transportation prepaid and accompanied with dated proof of purchase. This warranty applies only to the original purchaser of product and is nontransferable. Improper use or installation, use for racing, accident, abuse, unauthorized repairs or alterations voids this warranty. AEM® disclaims any liability for consequential damages due to breach of any written or implied warranty on all products manufactured by AEM®. Warranty returns will only be accepted by AEM® when accompanied by a valid Return Merchandise Authorization (RMA) number. Credit for defective products will be issued pending inspection. Product must be received by AEM® within 30 days of the date RMA is issued.

If you have a warranty issue, please call (800) 992-3000 and our customer service department will assist you. A proof of purchase is required for all AEM® warranty claims.

Not legal for sale or use on any pollution controlled motor vehicle in California or states adopting California emission procedures. See AEMIntakes.com for CARB status on each part for a specific vehicle.