



# INTAKE SYSTEM

## INSTALLATION INSTRUCTIONS

**21-887C**

**KIA**

**2017-21 SOUL**

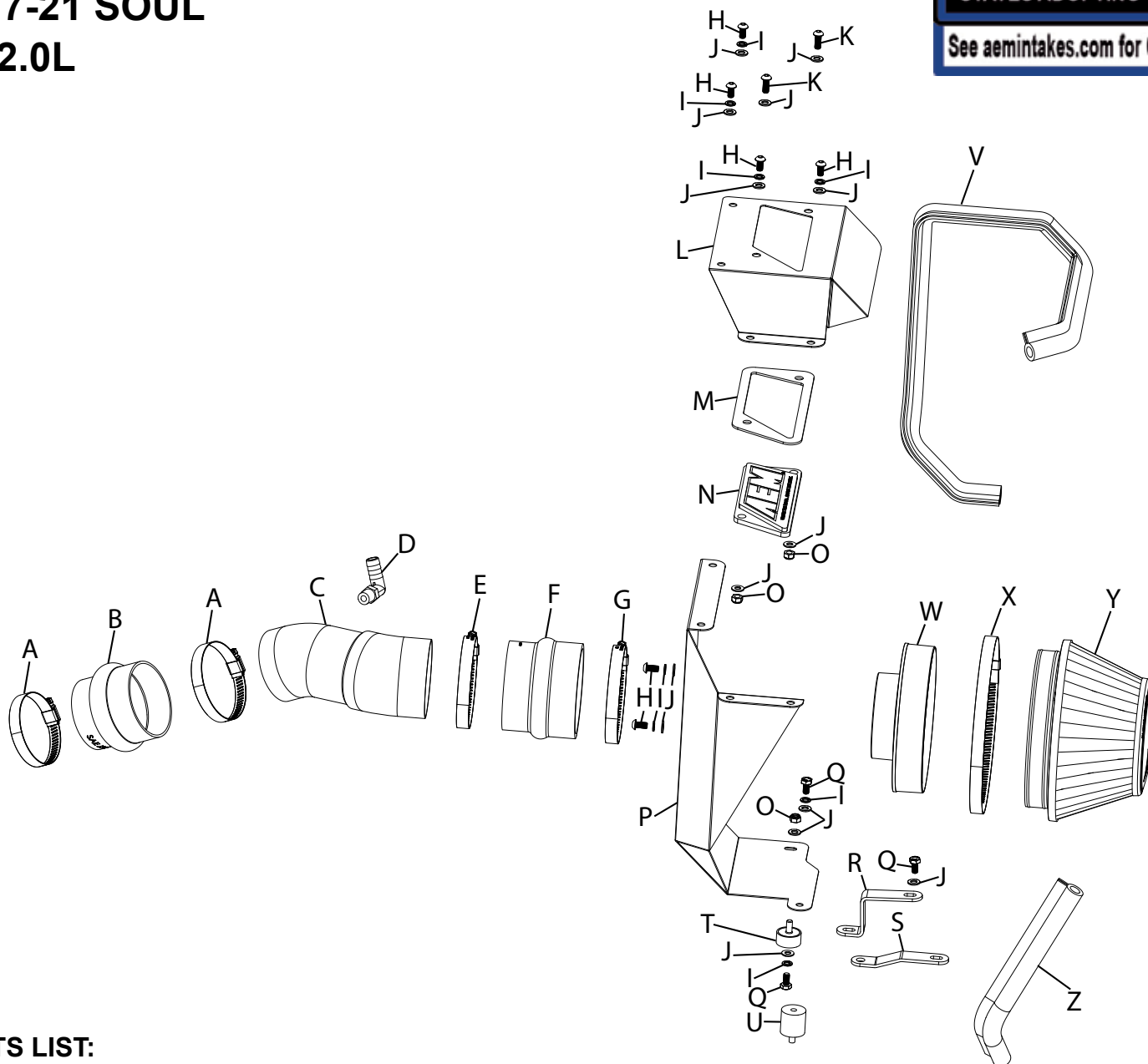
**L4-2.0L**

**NOT LEGAL FOR SALE OR USE ON ANY POLLUTION CONTROLLED MOTOR VEHICLE IN CALIFORNIA OR STATES ADOPTING CALIFORNIA EMISSION PROCEDURES.**

See [aemintakes.com](http://aemintakes.com) for CARB status on each part for a specific vehicle

### TOOLS NEEDED:

- Ratchet
- Extension
- 10mm socket
- 8mm socket
- Flat blade screw driver
- Pliers
- 4mm allen key
- 10mm wrench



### PARTS LIST:

Description	Qty.	Part #	Description	Qty.	Part #	Description	Qty.	Part #
A HOSE CLAMP; #44 STAINLESS	2	08560	J WASHER; 6MM FLAT	14	08269	S BRACKET; "Z"	1	26545
B HOSE; HUMP 3.25"/3.5" X 3"	1	5-576	K BOLT; M6 X 1 X 16MM	2	07730	T STUD; RUBBER, 1/2"L X 1"W	1	070228
C TUBE; 3"OD TO 3.25"OD	1	27576C	L LID; (CRS)	1	074539	U STUD; RUBBER, M6 X 1	1	02033
D VENT; 90 DEG, 1/2" HOSE	1	08110FK	M SPACER; CLEAR BADGE	1	7-364	V EDGE TRIM; 36"L	1	8-4036
E HOSE CLAMP; #52	1	08610	N PLATE; AEM LOGO, CLEAR	1	8-211-1	W ADAPTER; 6"	1	21512-1
F HOSE; HUMP 3" TO 2.75"	1	08421	O NUT; 6MM NYLOCK	3	07512	X 1/2" BNDHOSE CLAMP; 4.125	1	94104
G HOSE CLAMP; #56	1	08620	P HEAT SHIELD	1	074538	Y AIR FILTER	1	21-2093DK
H BOLT; M6-1 X 12MM	6	07794	Q BOLT; M6 X 1 X 12MM	3	07727	Z EDGE TRIM; 13"L	1	8-4013
I WASHER; M6 SPLIT LOCK	8	1-3025	R BRACKET; "Z" SML	1	020003			

**If you need any assistance please call 1-800-858-3333 to speak with a representative in our Customer Service Center before returning the product.**

**Read and understand these instructions BEFORE attempting to install this product. Failure to follow installation instructions and not using the provided hardware may damage the intake tube, throttle body and engine.**

### TO START:

1. Turn off the ignition and disconnect the negative battery cable.  
**NOTE: Disconnecting the negative battery cable erases pre-programmed electronic memories. Write down all memory settings before disconnecting the negative battery cable. Some radios will require an anti-theft code to be entered after the battery is reconnected. The anti-theft code is typically supplied with your owner's manual. In the event your vehicles anti-theft code cannot be recovered, contact an authorized dealership to obtain your vehicles anti-theft code.**



2. Release the spring clamp that secures the CCV hose to the factory intake tube and then disconnect the CCV from the intake tube.



3. Pop the centers of the two push clips that secure the fresh air duct to the core support and then remove the clips from the duct.



4. Lift up and disconnect the fresh air duct from the factory air filter housing and then remove it from the vehicle.



5. Loosen the hose clamp that secures the factory intake hose to the throttle body.



6. Remove the three bolts that secure the factory air filter housing to the vehicle.



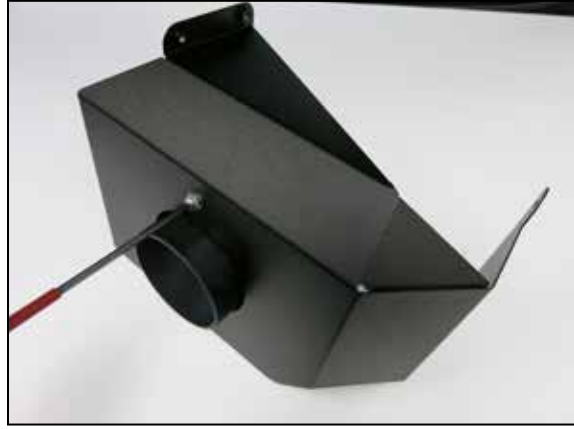
7. Separate the intake tube from the throttle body and then lift the entire factory intake system out of the vehicle.



8. Install the AEM window into the heat shield cover using the provided aluminum spacer plate and hardware.



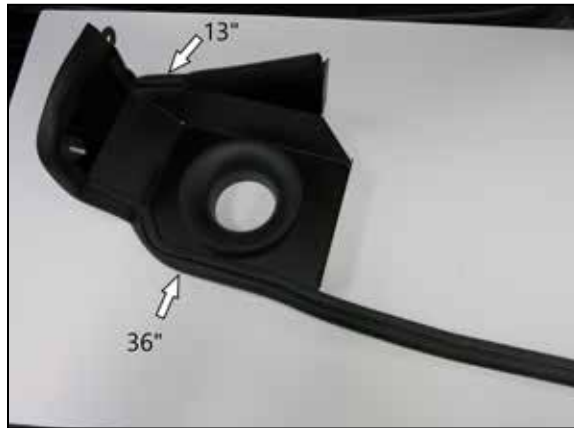
9. Install the provided 90-degree fitting into the AEM intake tube as shown.



10. Install the filter adapter into the heat shield using the provided hardware.



11. Install the provided 1/2" tall rubber mounted stud onto the heat shield using the provided hardware.



12. Install the provided edge trim onto the heat shield as shown.



13. Install the 1" tall rubber mounted stud onto the frame rail where shown.



14. Install the heat shield into the vehicle and secure with the provided hardware.



15. On 2018 and earlier models, install mounting bracket p/n 26545 onto the rubber mounted studs. On 2019 and later models install mounting bracket p/n 020003.



16. Install the provided coupler onto the throttle body and secure with the provided hose clamp.



17. Install the large hump hose onto the intake tube, then install the assembly into the coupler at the throttle body, align the large hump hose with the filter adapter and slide the hose onto the adapter. Adjust the assembly for best fit and then tighten the hose clamps.



18. Connect the CCV hose to the 90-degree fitting installed into the intake tube and secure with the factory spring clamp.



19. Install the AEM air filter onto the filter adapter and secure with the provided hose clamp.



20. Install the heat shield lid onto the heat shield and secure with the provided hardware. Install the excess edge trim onto the lid as shown.



### Reassemble Vehicle

Position the inlet pipes for the best fitment. Be sure that the pipes or any other components do not contact any part of the vehicle. Tighten the rubber mount, all bolts, and hose clamps. Check for proper hood clearance. Re-adjust pipes if necessary and re-tighten them. Inspect the engine bay for any loose tools and check that all fasteners that were moved or removed are properly tightened. Reconnect negative battery terminal and start engine. Let the vehicle idle for 3 minutes. Perform a final inspection before driving the vehicle.

### Service and Maintenance

AEM Induction Systems requires cleaning the intake system's air filter element every 100,000 miles. When used in dusty or off-road environments, our filters will require cleaning more often. We recommend that you visually inspect your filter once every 25,000 miles to determine if the screen is still visible. When the screen is no longer visible some place on the filter element, it is time to clean it. To clean, purchase our Synthetic air filter cleaner, part number AEM-1-1000 and follow the easy instructions. Use window cleaner to clean your powder coated AEM® intake tube.

**NOTE: DO NOT USE aluminum polish on powder coated AEM® intake tubes.**

NOT LEGAL FOR SALE OR USE ON ANY POLLUTION CONTROLLED MOTOR VEHICLE IN CALIFORNIA OR STATES ADOPTING CALIFORNIA EMISSION PROCEDURES.

See [aemintakes.com](http://aemintakes.com) for CARB status on each part for a specific vehicle

### AEM Air Intake System Warranty Policy

AEM® warrants that its intake systems will last for the life of your vehicle. AEM will not honor this warranty due to mechanical damage (i.e. improper installation or fitment), damage from misuse, accidents or flying debris. AEM will not warrant its powder coating if the finish has been cleaned with a hydrocarbon-based solvent. The powder coating should only be cleaned with a mild soap and water solution. Proof of purchase of both the vehicle and AEM intake system is required for redemption of a warranty claim.

This warranty is limited to the repair or replacement of the AEM part. In no event shall this warranty exceed the original purchase price of the AEM part nor shall AEM be responsible for special, incidental or consequential damages or cost incurred due to the failure of this product. Warranty claims to AEM must be transportation prepaid and accompanied with dated proof of purchase. This warranty applies only to the original purchaser of product and is nontransferable. Improper use or installation, use for racing, accident, abuse, unauthorized repairs or alterations voids this warranty. AEM disclaims any liability for consequential damages due to breach of any written or implied warranty on all products manufactured by AEM. Warranty returns will only be accepted by AEM when accompanied by a valid Return Merchandise Authorization (RMA) number. Credit for defective products will be issued pending inspection. Product must be received by AEM within 30 days of the date RMA is issued.

If you have a warranty issue, please call (800) 992-3000 and our customer service department will assist you. A proof of purchase is required for all AEM warranty claims.