



# 2018+ SUBARU IMPREZA XV CROSSTREK MUD FLAP INSTALLATION INSTRUCTIONS

For high resolution color images of these instructions, please visit <http://www.rallyarmor.com>

Check wheel clearance after installation, especially vehicles outfitted with non-OEM wheels and suspensions.

To protect your Rally Armor mud flap set, care must be taken during parking and reversing.

**Rally Armor is not responsible for damage or loss of installed flaps.**

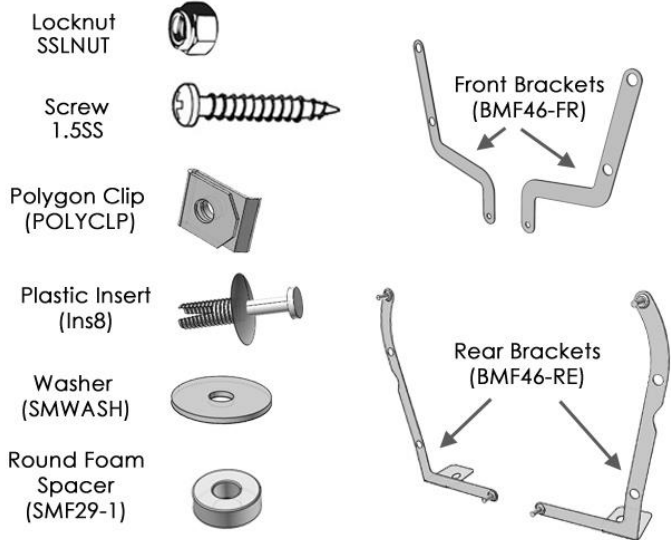
Packed by

**IMPORTANT NOTES:**

**YOUR MOUNTING HARDWARE CONSISTS OF**



Quantity	Hardware Item	Item ID
2	Front brackets	BMF46-FR
2	Rear Brackets	BMF46-RE
16	Washers	SmWash
4	Stainless Steel LockNuts	SSLnut
10	Polygon Clips	PolClp
10	Stainless Steel Screws	1.5SS
2	Round Foam Spacers	SMF29-1
2	Plastic Inserts	Ins8



**Recommended tools:** Offset, ratcheting or stubby Phillips screwdriver, small flat head screwdriver, 7/16" wrench.

**Cautionary Tip:** The hardware is strong and self-threading but over-tightening the clips is not advised. Tighten only until hardware is seated against the mud flap.

**Installation Tip:** To ease installation and avoid damage to existing OEM clips during removal, a well-lit, climate controlled installation environment is recommended.

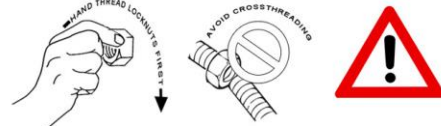
**Parking and Reversing:** Any extended mud flap application can be damaged or dislodged should they get caught in between a tire and a curb or object. To protect your Rally Armor mud flap set, care must be taken during parking and reversing. Rally Armor is not responsible for damage or loss of installed flaps.

**To the installer:** Please return these instructions to the customer after installation. Always test and adjust wheel clearance before returning vehicle

**To the customer:** Retain these instructions after installation. They may be necessary for installing other optional parts or removal of this accessory.

**CAREFULLY HAND THREAD LOCKNUTS TO BOLT FIRST TO AVOID CROSSTHREADING**

A MISALIGNED NUT **CAN DAMAGE A BOLT** REGARDLESS OF PRESSURE APPLIED TIGHTEN AFTERWARDS ONLY UNTIL SEATED. REPLACEMENTS FOR MIS-INSTALLED, DAMAGED OR LOST HARDWARE DURING INSTALLATION ARE THE SOLE RESPONSIBILITY OF THE INSTALLER



## Front Mud Flap Installation

Begin by parking the vehicle on an even surface. Turn the steering wheel towards the side you are working on to allow access to the inner wheel well area. Remove OEM splash guards if present.

- **(Figure A)** Remove the front fender liner retainer located underneath the side skirt. Retain fastener as it will be re-used.
  - **(Figure B)** Remove the three OEM fender liner fasteners as shown. Pull liner away to gain access to the interior fender area.
  - **(Figure C)** Place 3 Polygon clips (PolClip) over each mounting point at an angle as shown. Re-install liner.
- Ensure that the clips have not shifted during fender liner re-installation. Re-install lower OEM fender liner fastener.

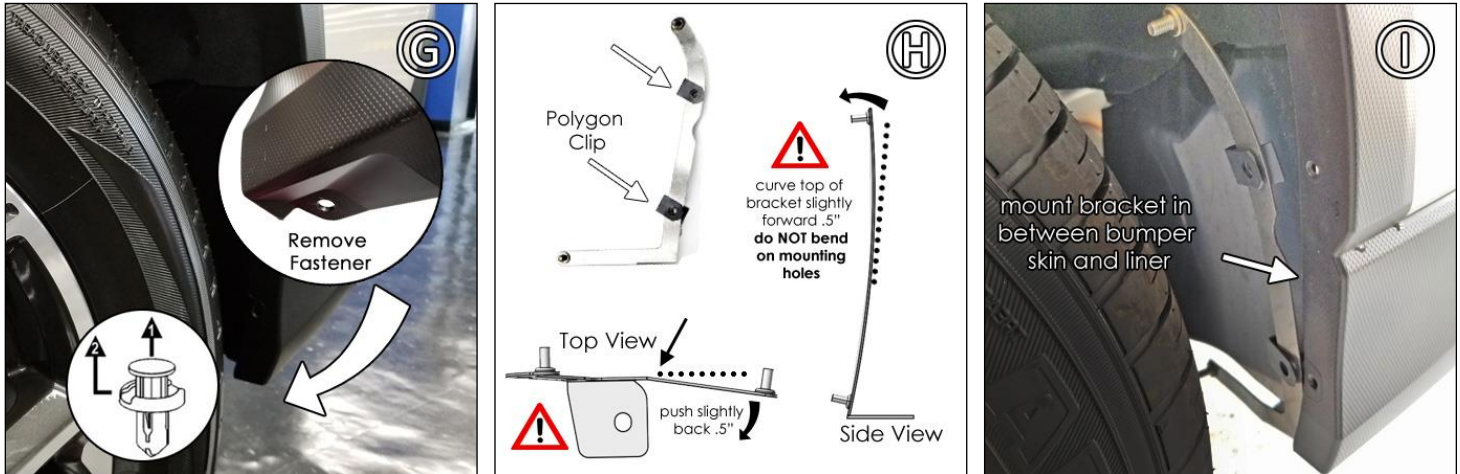


- **(Figure D)** Carefully curve the bracket **SLIGHTLY** back as shown (10mm). **Do not bend**. Place a circle foam spacer on the bracket as shown. Ensure the foam spacer is against liner when mounted. Place a circle foam spacer on the bracket as shown. Do not bend the bracket; you are positioning the foam spacer to be placed snug against the wheel well liner when mounted.
- **(Figure E)** Place the front bracket against logo side of the mud flap as shown in preparation for mounting. Foam Spacer should be snug against wheel well liner when mounted. Repeat **Step/Figure D** as needed.
- **(Figure F)** Place the mud flap with the logo facing the rear of the vehicle, against the corresponding mounting points on the fender liner and bracket. Place a washer (SmWash) over each long screw (1.5SS) of the original screws through the flap into the 3 mounted clips shown. Secure the inner portion of mud flap using a small washer (SmWash) and insert (Ins8). Align the outer edge of the flap by incrementally adjusting the angle of the flap and walking away from the vehicle until the flap is perpendicular to even ground. Tighten all mounting screws and bracket. Tighten only until hardware is seated against the mud flap. **Do not over tighten**.



## Rear Mud Flap Installation

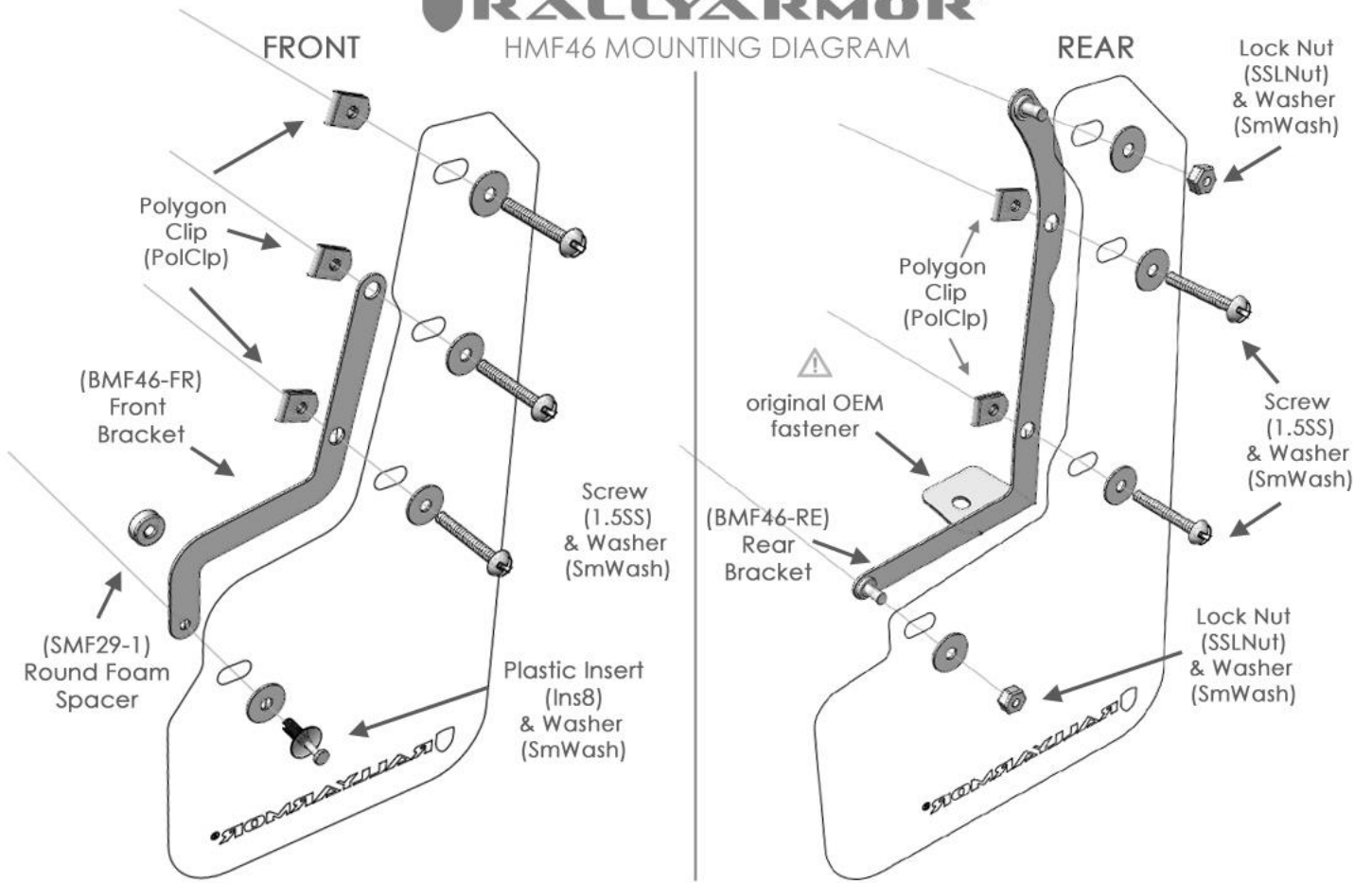
- **(Figure G)** Carefully remove stock retainer from under the rear bumper area. Unlock the inner portion first, then remove the entire assembly. **Completely separate the inner portion of the retainer from the outer clip. You will be re-using the fastener.**
- **(Figure H)** (*Top View*) Bend the lower section of the bracket towards the rear, no more than .5." This allows for more tire clearance. Lower section of bent bracket **should NOT touch inner liner when mounted.** (*Side View*) You can also curve the upper portion slightly forward as shown. Do not bend on mounting holes. Place two polygon clips over each of the two mounting holes of the bracket.
- **(Figure I)** Mount the bottom of the bracket **BETWEEN bumper skin and the inner portion of the bumper.**



- **(Figure J)** Secure bracket with original fastener by inserting the outer portion of the OEM insert through the bumper and bracket first, then locking in place using the inner piece. **Tip:** Lower bracket can be adjusted by hand to ensure proper alignment.
- **(Figure K)** Place the mud flap with the logo facing the rear of the vehicle, against corresponding mounting points on the bumper and bracket. Thread a washer (SmWash) and screw (1.5SS) into each of the two polygon clips (PoCl) mounted on the bracket. Loosely hand thread locknut (SSLnut) and washer (SmWash) on upper & lower mounting points.
- **(Figure L)** Align outer edge of the flap by incrementally adjusting the angle of the flap and walking away from the vehicle until the flap is perpendicular to even ground. Tighten hardware only until seated against mud flap. **Do not over tighten**



**RALLYARMOR®**  
HMF46 MOUNTING DIAGRAM



Content and images are copyright of Rally Armor® LLC